

ECOLOGY & BIODIVERSITY SEMINAR SERIES



INSECT CONSERVATION IN THE ANTHROPOCENE

Despite being the most speciose class of animals, insect conservation strategies remain underdeveloped relative to those for vertebrates and plants. Recent studies have documented dramatic declines in insect diversity and abundance, primarily due to anthropogenic threats. Halting and reversing these declines should be a global conservation priority. For many species, protected areas have become the last refuge from human-induced threats; however, the potential for protected areas to contribute to global insect conservation remains poorly documented. Most research on protected areas (PAs) focusing on insects examines species representation, and few studies assess threats to insects or the role of effective PA management in insect conservation. Moreover, the current protected areas fail to adequately cover the geographic ranges of 76% of insect species, and nearly 1,900 species from 225 families are not represented. The situation is worse for the migratory insects: PA coverage is inadequate in at least one season for 84% of migratory butterflies, and 17% only achieved target representation in one season, and 43% did not meet the target representation in any season. Similarly, international treaties do not benefit insects. Insects are underrepresented in conservation assessments primarily because of a lack of species distribution data, which can be minimised by utilising locality data from social media. Coordinated efforts across multiple countries are needed to develop protected areas that conserve insects. The Kunming-Montreal Global Biodiversity Framework provides guidance on protected-area designations that require consideration of insect needs.

DR. SHAWAN CHOWDHURY

I am a global change biologist specialising in insects, originally from a small village in Bangladesh. I completed my bachelor's and master's degrees from the University of Dhaka, Bangladesh. In May 2022, I earned my PhD from the University of Queensland, under the supervision of Professors Richard Fuller and Myron Zalucki. I then completed a two-year postdoctoral fellowship with Professor Aletta Bonn at the German Centre for Integrative Biodiversity Research (iDiv). Before joining Monash University, I held a short postdoctoral position with Professor Phill Cassey at the University of Adelaide.



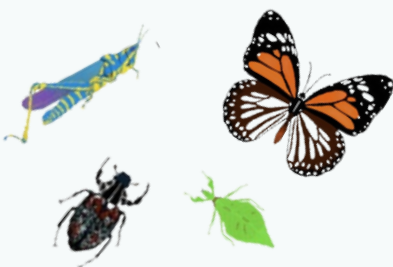
You can find more about our research here <https://shawanchowdhurylab.com/>.



Date & Time: 5th Feb (Thu) 16:00

Venue: Hybrid (3N01 & Zoom)

PS No socials on Thursday



See Zoom Link here

